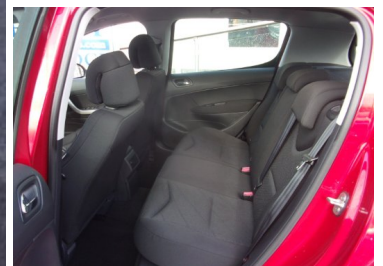
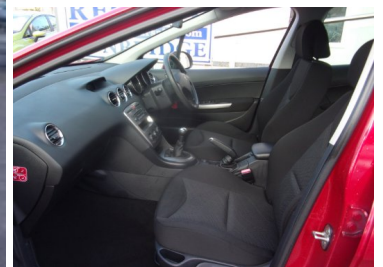


Regent Car Sales

"We will not be beaten on price, quality or after sales services"

2010(59) Peugeot 308 1.6 VTi Verve 5dr

SOLD



Engine: Petrol
Body: Hatchback
Gearbox: Manual
Capacity: 1598cc
Colour: Red
Mileage: 61,571
CO²: 159g/km
MPG: 42.2mpg
Top Speed: 122mph
BHP: 118bhp
Insurance Grp: 15E

Regent Car Sales
 Priory Road
 Tonbridge
 Kent, TN9 2AQ

MAIN DEALER SERVICE HISTORY	16" ALLOYS
METALLIC - BABYLON RED	AUDIBLE LIGHTS ON WARNING
CLOTH - BLACK	DIGITAL CLOCK
ELECTRIC BOOT RELEASE ON TAILGATE	EXTERNAL TEMPERATURE GAUGE
IGNITION KEY IN WARNING CHIME	INFORMATION DISPLAY
REMOTE HEADLAMP ADJUSTMENT FROM FASCIA	PAS - SPEED RELATED
TRIP COMPUTER	REV COUNTER
PEUGEOT CONNECT WITH USB AND BLUETOOTH	SERVICE INTERVAL INDICATOR
SECURITY CODED AUDIO	6 SPEAKERS (4 SPEAKERS/2 TWEETERS)
STEERING COLUMN MOUNTED MULTIFUNCTION CONTROLS	RD4 STEREO RADIO/MONO CD PLAYER
BODY COLOUR DOOR/BOOT HANDLES	SPEED DEPENDENT AUDIO VOLUME CONTROL
DOUBLE ANGLED DRIVER'S DOOR MIRROR	BLACK GRILLE BARS
ELECTRIC FRONT WINDOWS + ONE TOUCH + ANTI-PINCH	BODY COLOUR DOOR MIRRORS
FRONT FOG LAMPS	BODY COLOUR FRONT/REAR BUMPER APRONS
	DOUBLE OPTIC HEADLIGHTS WITH CLEAR POLYCARBONATE LENSES
	ELECTRIC REAR WINDOWS WITH ONE TOUCH/ANTI-PINCH
	HEADLAMP DELAY

Call:01732 366388 | www.regentcarsales.com